

Thank you for purchasing AUTEL tool. Manufactured to a high standard, our tool will, if used according to these instructions and properly maintained, give you years of trouble-free performance.

### Getting Started



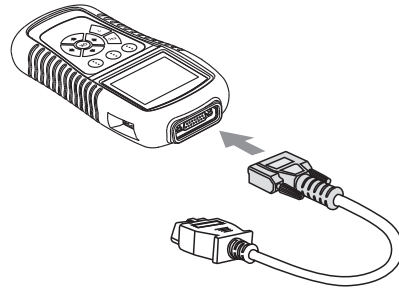
**IMPORTANT:** Before operating or maintaining this unit, please read these instructions carefully. Use this unit correctly and properly. Failure to do so may cause damage and/or personal injury and will void the product warranty.

1



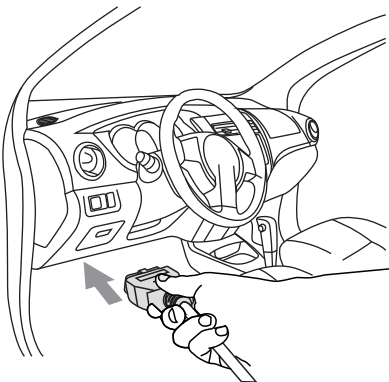
- Scan QR Code to visit our website at [www.autel.com](http://www.autel.com).
- Create an Autel ID and register the product with device's SN and password.

2



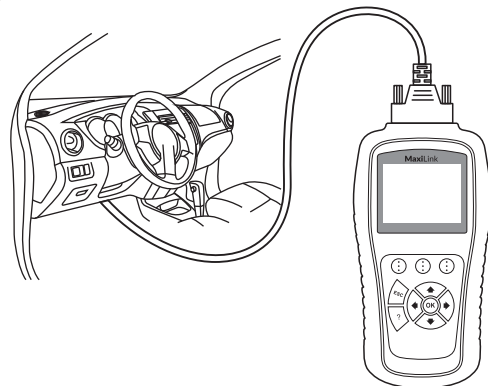
- Connect the OBD II cable's female adapter to the MaxiLink ML619.
- Tighten the captive screws.

3



- Connect the OBD II cable's 16-pin male adapter to the Vehicle's DLC which is generally located under the vehicle dash.
- The device will be automatically powered up.

4



- Your MaxiLink ML619 is now ready to work.

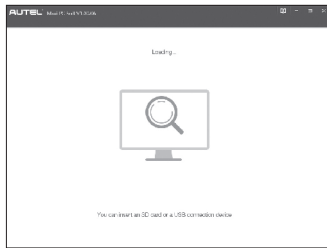


## Please download the **Maxi PC Suite** from

[www.autel.com](http://www.autel.com) > Support & Updates > Firmware & Downloads > Update Client, and install to your Windows-based computer.

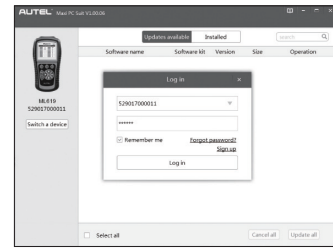
### Software Update and Delete

1



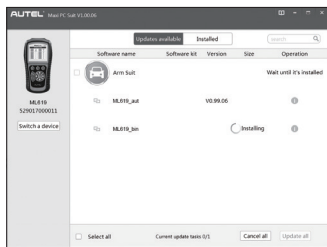
- Take out the TF card of your device and insert it into the computer.
- Run the **Maxi PC Suite** on the computer. Wait for the **Log In** window to display.

2



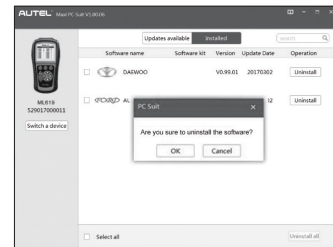
- Enter your Autel ID and password and wait for the **Update** window to display. If you forget your password, click the **[Forgot Password?]** link to our website and retrieve your password. Or click **Sign up** to create an Autel ID to continue.
- Select tool and serial number, click **OK** to continue.

3



- In the **Update** window, select the appropriate files to install.

4



- Click on the **Installed** tag and the list of installed programs will display.
- Select the program(s) you would delete.

### Data Printing

- Connect the device to the computer with the USB cable supplied.
- Run **Autel Printer** on the computer which is installed after the installation of **Maxi PC Suite**.
- Select **Playback** function in the Main Screen of the tool. On the data menu screen, use the **UP/DOWN** scroll button to select the data you want to print. Wait for the review window to display, and then select **Print** function.
- The selected data will display on the textbox of the **Autel Printer**. By selecting the function keys on the right, you could execute the following operations:
  - Print** – print all data in the textbox. ( A printer should be connected to the computer. )
  - Edit** – display an editable NOTEPAD window with recorded data.
  - Copy** – copy data in the textbox to the clipboard.
  - Clear** – delete data in the textbox.
  - Exit** – quit the operation.

For service and support, please contact us.

<http://pro.autel.com> / [www.autel.com](http://www.autel.com) / [support@autel.com](mailto:support@autel.com)  
0086-755-86147779 (China HQ) / 1-855-288-3587/1-855-AUTELUS (North America)  
0049 (0) 61032000522 (Europe) / (+507) 308-7566 (South America) / 03 9480 2978 / +61 476293327 (Australia)