

Thank you for purchasing this Autel tool. This tool is manufactured to a high standard and will provide years of trouble-free performance when used in accordance to these instructions and properly maintained.

Getting Started



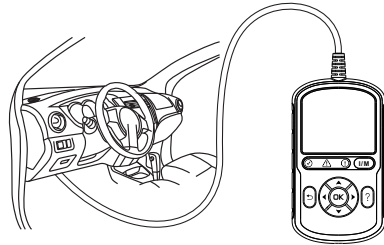
IMPORTANT: Before operating or maintaining this unit, please read these instructions carefully. Failure to use this unit correctly may cause damage and/or personal injury and will void the product warranty.

1



- Scan the QR code to visit our website at pro.autel.com.
- To update the AL549, please create an Autel ID and register the product with its serial number and password. The serial number and password can be found by selecting **Setup > About** on the tool screen.

2

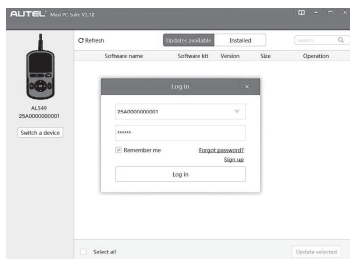


- Connect the OBDII cable's 16-pin male adapter to the vehicle's Data Link Connector (DLC), which is generally located under the vehicle dashboard.
- The tool will be automatically powered on.
- Your AL549 is now ready for use.

Software Update and Delete

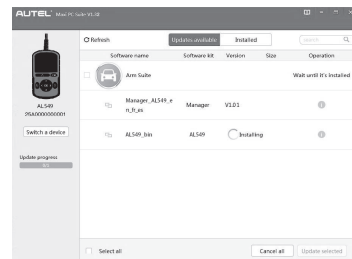
Please download the **Maxi PC Suite** from: www.autel.com > **Support > Downloads > Autel Update Tools**, and install to your windows-based computer.

1



- Connect the device with the computer using the included USB cable.
- Run the **Maxi PC Suite**. Select **Update Mode** in the tool. Wait for the Log In window to display.
- Enter your Autel ID and password and wait for the Update window to appear. If you forgot your password, click **Forgot Password** to retrieve it. If you do not already have an Autel ID, you can click **Sign up** to create a new account.
- Select the product type and serial number, click **OK** to continue.

2

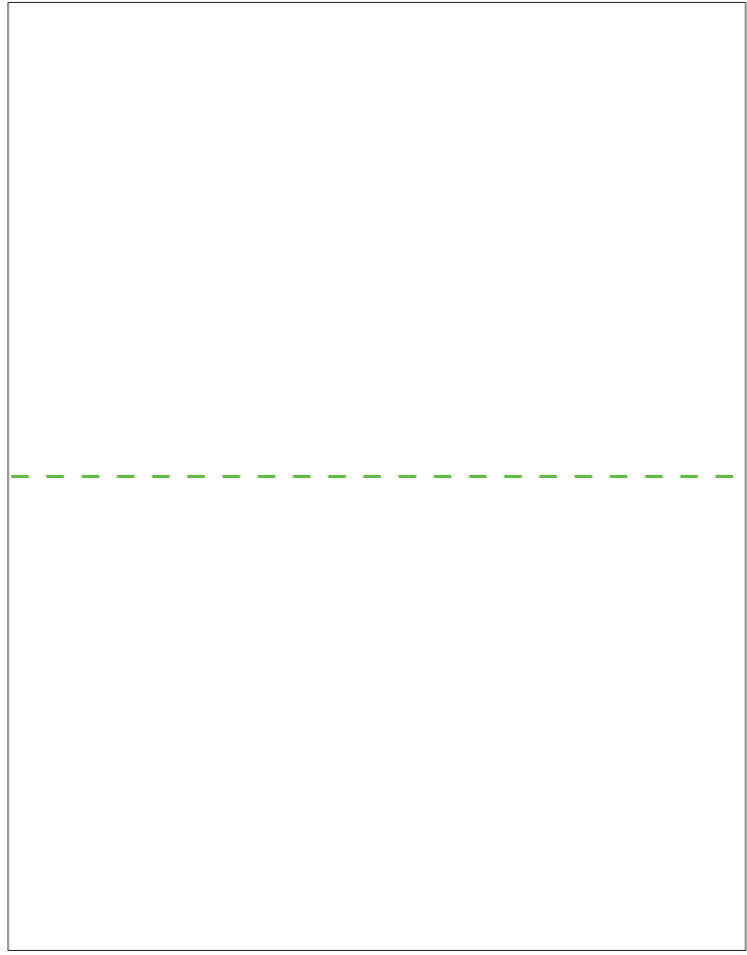


- In the Update window, select the items you want to install.
- Click on the **Installed** tag and the page will show the list of programs installed. Select the items you want to delete.

NOTE: The interfaces in this quick guide are for reference only.

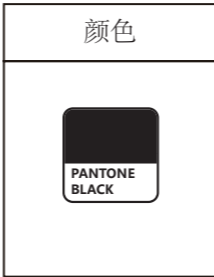
For service and support, please contact us.

REV	POSITION	DATE	DESCRIPTION



对折

RELEASE LEVEL: &PROJ. RELEASE
FILENAME: MODEL NAME



注：AUTEL设计部不指定供应商。效果做到参考样品一致即可。

DIM	Sheetmetal	Machining
0~6	0.10	0.05
6~30	0.15	0.10
30~120	0.25	0.15
120~300	0.35	0.20
300~600	0.50	0.25
600~1200	0.60	0.30
>1200	0.80	0.50
ANG.	1°	30°

AUTEL 道通科技股份有限公司
Autel Intelligent Technolog Corp.Ltd.

These Drawings And Specification
Are The Property Of AUTEL. And Shall
NOT Be Reproduced Copied Or Used
In Any Manner Without The Prior
Written Consent Of AUTEL.

PROJ

TITLE: 快速指引	
DRAW: 何群	UNIT'S: 190x264mm
CHKD: 周若时	FINISH:
STAD:	MASS(Kg):
APPD: 李伟斯	SCALE:
SHEET: 1 OF 1	PRODUCT: AL459
DWG NO.:	PART NO.:
Material: 120g书写纸	

